

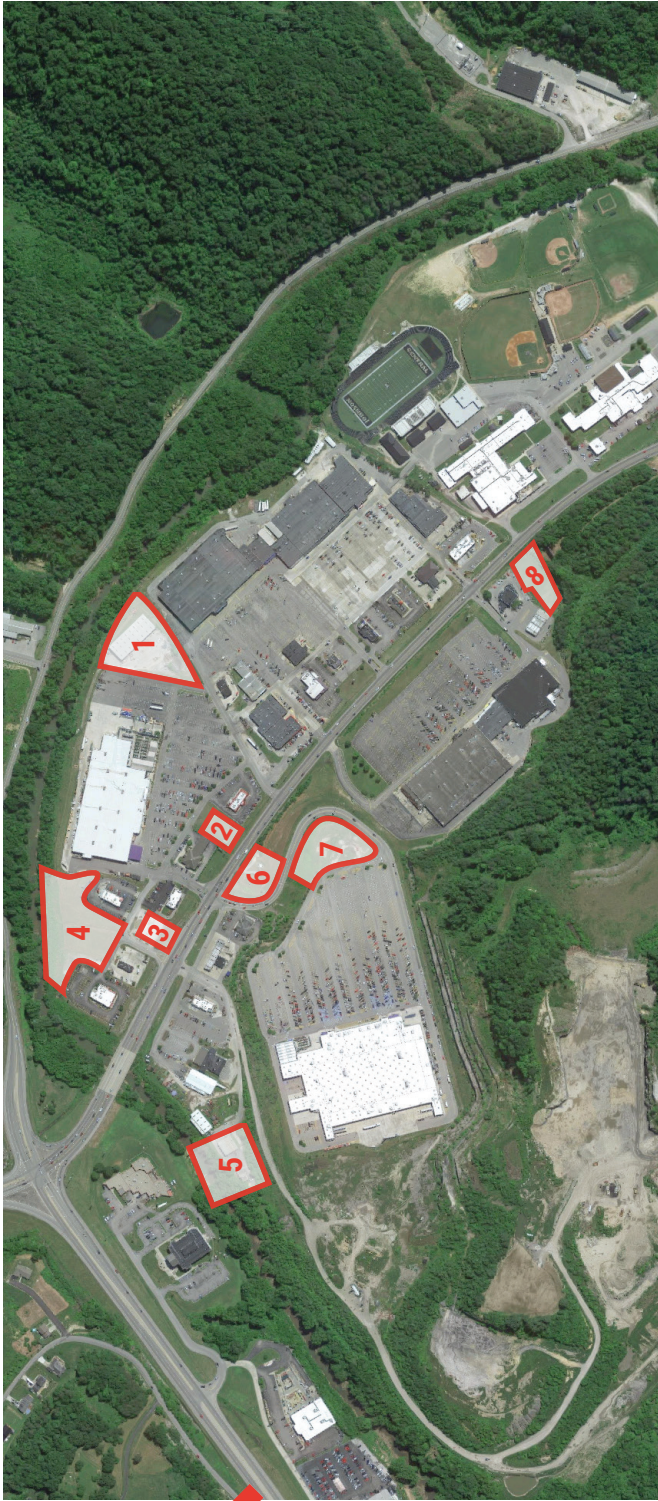
FOR SALE OR LEASE

3 Outparcels



Paintsville, Kentucky

NORTH MAYO TRAIL, PAINTSVILLE, KY




- Located in and around Mayo Plaza in Paintsville, Kentucky
- Paintsville is located about 100 miles east of Lexington, KY and 50 miles south of Ashland, Kentucky
- Paintsville serves as a center of commerce, banking, medicine, education and law for a multi-county region that includes Johnson, Lawrence, Floyd, Magoffin, Martin and Morgan in KY
- Over 1,700 students attend Johnson County Independent, Middle and High Schools
- High traffic counts support this as a regional trade area extending far beyond Paintsville (Ky Hwy 321 has 13,711 VPD; US 460 has 13,038 VPD)
- Regional rugged topography is a barrier to additional new competition in the area
- Multiple parcels on both sides of Highway 321

KEY TENANTS OF MAYO PLAZA INCLUDE:

- | | | |
|------------------|---------------|------------------------|
| • Lowe's | • Dollar Tree | • Arby's |
| • Maurices | • Food City | • Burger King |
| • Hibbett Sports | • GameStop | • Big Sandy Superstore |
| • Ollies | • Walmart | • Goodwill |
| • Shoe Show | • McDonald's | • Bob Evans |
| | • Wendy's | |



 Charlie Dahlem, CCIM
President
1531 Ormsby Station Court
Louisville, KY 40223

📞 o: 502.479.0200
📠 d: 502.814.0290
✉️ charlie@dahlem.com
🌐 dahlem.com



No warranty or representation, express or implied, is made as to the accuracy of the information contained herein, and same is submitted subject to errors, omissions, change of price, rental or other conditions, withdrawal without notice, and to any special listing conditions imposed by our principals.







PARCEL	ACRES	FOR LEASE \$	FOR SALE \$
--------	-------	--------------	-------------

1	SOLD	SOLD	SOLD
2	0.426 Acres	\$34,100/yr	\$383,600
3	SOLD	SOLD	SOLD
4	2.679 Acres	OFF MARKET	OFF MARKET
5	SOLD	SOLD	SOLD
6	SOLD	SOLD	SOLD
7	1.239 Acres	\$49,400/yr	\$555,700
8	0.878 Acres	\$33,700/yr	\$379,200



 Charlie Dahlem, CCIM
 President
 1531 Ormsby Station Court
 Louisville, KY 40223

 o: 502.479.0200
 d: 502.814.0290
 charlie@dahlem.com
 dahlem.com

No warranty or representation, express or implied, is made as to the accuracy of the information contained herein, and same is submitted subject to errors, omissions, change of price, rental or other conditions, withdrawal without notice, and to any special listing conditions imposed by our principals.